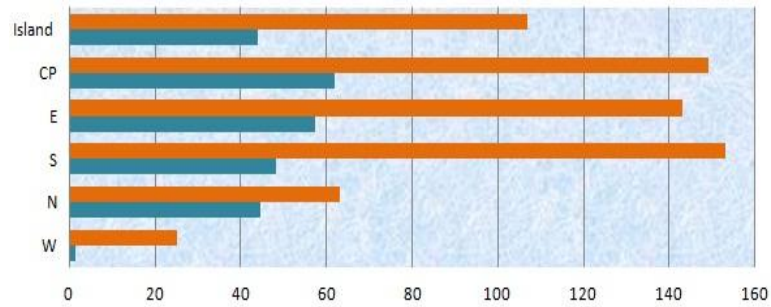


Mauritius Meteorological Services

Mean Rainfall for 1-15 June 2018

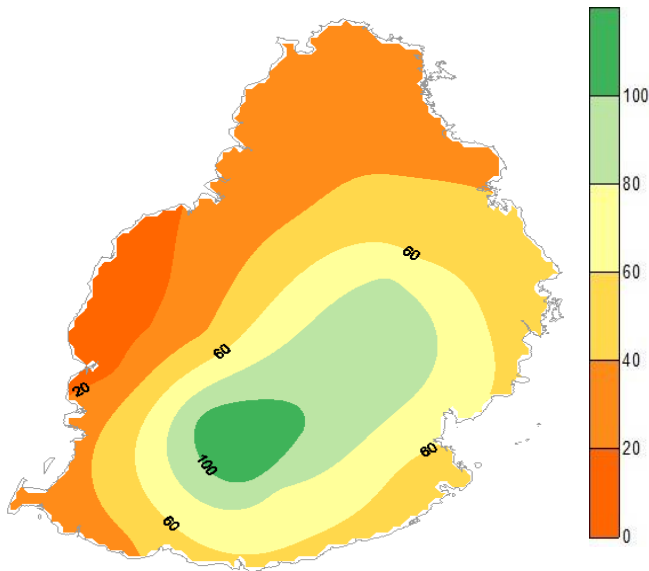
Mauritius

The first fortnight of June 2018 was dry with all regions over the island receiving well below normal rainfall. It was particularly dry to the West which recorded about only 1 % of its normal rainfall. Over the Central Plateau and the southern slopes rainfall was deficient by over 50 mm.

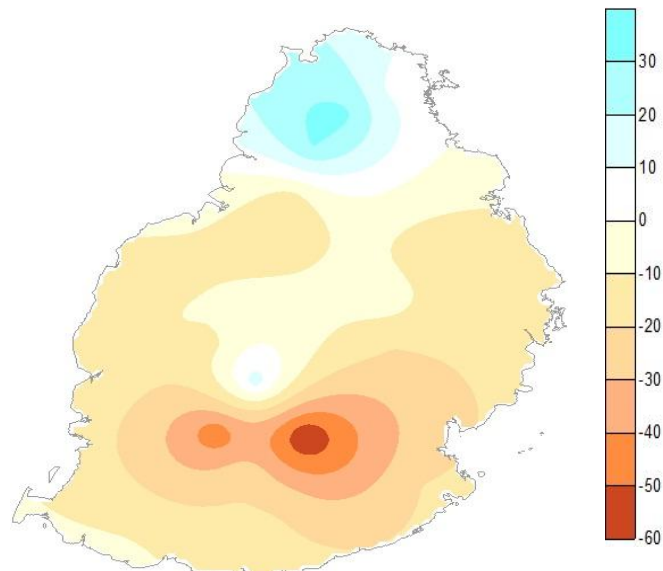


	W	N	S	E	CP	Island
LTM (1981-2010) Rainfall (mm)	25	63	153	143	149	107
Actual Mean rainfall (mm)	1	45	48	57	62	44

Observed Rainfall (mm)



Rainfall Anomaly (mm)



Outer Islands

	Amount (mm)			
	Stations	Actual Mean Rainfall	LTM Rainfall	% of LTM
Rodrigues	Pointe Canon	36	72	50
	Plaine Corail	11	61	18
	Citronelle	29	117	25
	Agalega	19	82	23
	St Brandon	39	49	80

¹Dry conditions prevailed over Rodrigues and mean rainfall during this first fortnight was well below the LTM rainfall for the month.

¹Drier conditions prevailed over Agalega while St Brandon was relatively wetter.

¹Rainfall anomaly compared to the monthly long term mean.

Ram Dhurmea

For Director

19 June 2018