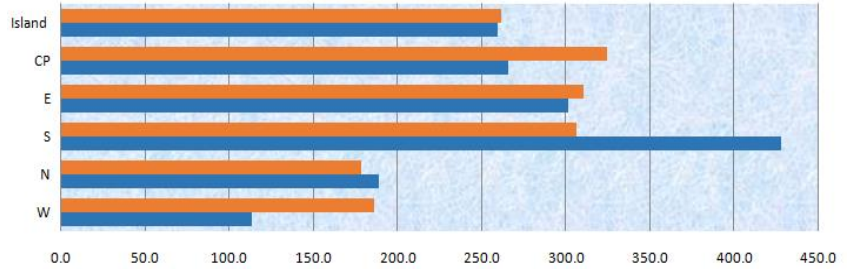


Mean Rainfall for 1-31 January 2018

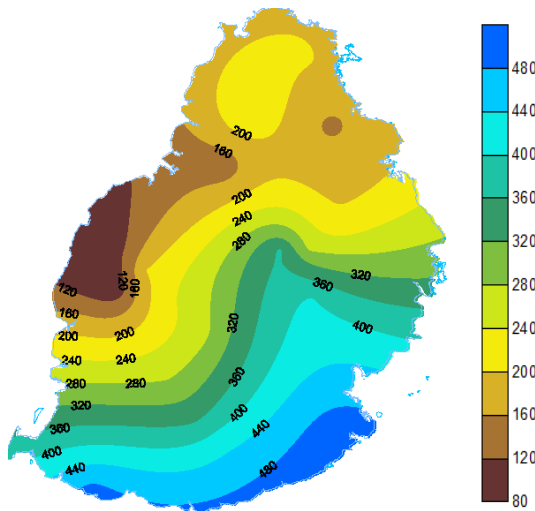
Mauritius

January 2019 received normal rainfall amounting to 259 mm, representing 99 % of the long term mean for the period. 84 % of this rainfall was recorded in the last few days of the month. Very wet conditions prevailed to the South with an excess rainfall up to 320 mm, whereas to the West and over the Central Plateau it was locally deficient by up to 140 mm.

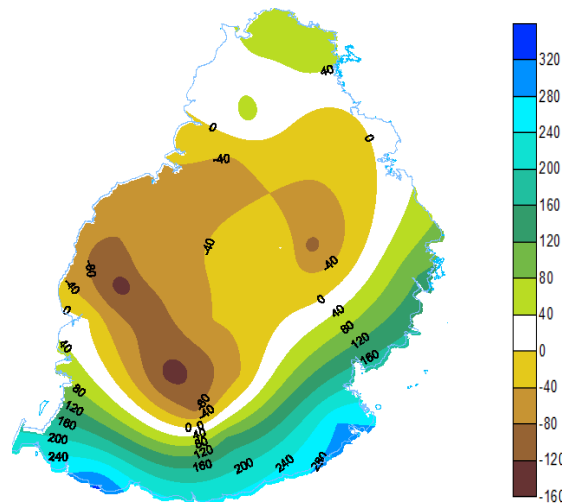


	W	N	S	E	CP	Island
January LTM (1981-2010) Rainfall (mm)	186	178	306	310	324	261
Actual Mean rainfall (mm)	112.9	188.4	427.8	301.1	265.4	259.1

Observed Rainfall (mm)



Rainfall Anomaly (mm)



Outer Islands

Stations	Amount (mm)			
	Actual Mean Rainfall	LTM Rainfall	% of LTM	
Rodrigues	Pointe Canon	106	149	71
	Plaine Corail	125	130	96
	Citronelle	105	188	56
	Agalega	292	274	107
St Brandon	82.2	158	52	

Slightly below normal rainfall was observed at Rodrigues.

Below normal rainfall was observed at St. Brandon while Agalega received normal rainfall.

Ram Dhurmea
For Director
11 February 2019