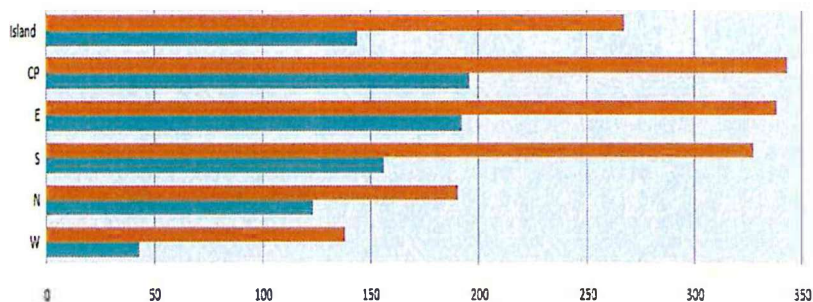


Mean Rainfall for 1-31 March 2019

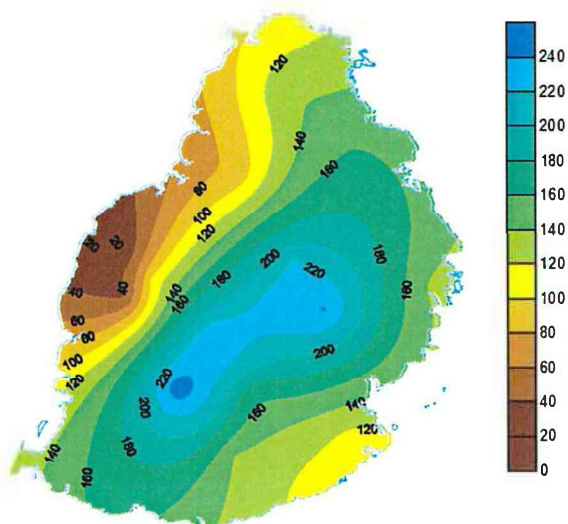
Mauritius

The month of March 2019 received below normal rainfall amounting to 144 mm, representing 55 % of the long term mean for the period. The second fortnight turned out to be relatively wetter than the first fortnight with 63 % of the month rainfall. However, all regions over the island had deficient rainfall. Some places over the Central Plateau had up to 290 mm of less rainfall.

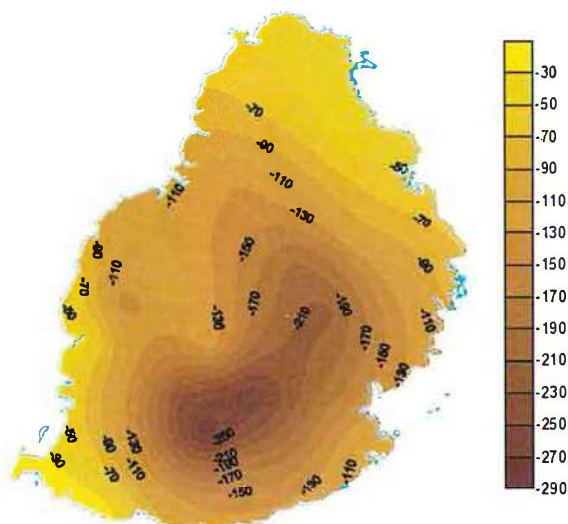


	W	N	S	E	CP	Island
LTM (1981-2010) Rainfall (mm)	135	190	327	338	343	267
Actual Mean rainfall (mm)	43	123	156	192	195	144

Observed Rainfall (mm)



Rainfall Anomaly (mm)



Outer Islands

	Stations	Amount (mm)		
		Actual Mean Rainfall	LTM Rainfall	% of LTM
Rodrigues	Pointe Canon	386	133	290
	Plaine Corail	396	135	293
	Citronelle	466	186	251
	Agalega	159	169	94
	St Brandon	73	130	56

Very wet conditions prevailed at Rodrigues with above normal rainfall

Below normal rainfall was observed at St. Brandon

Normal rainfall was observed at Agalega

Director
10 April 2019