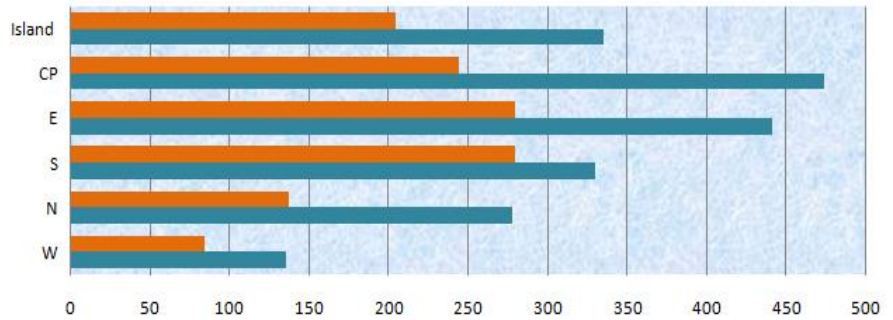


# Mauritius Meteorological Services

## Mean Rainfall for 1- 30 April 2019

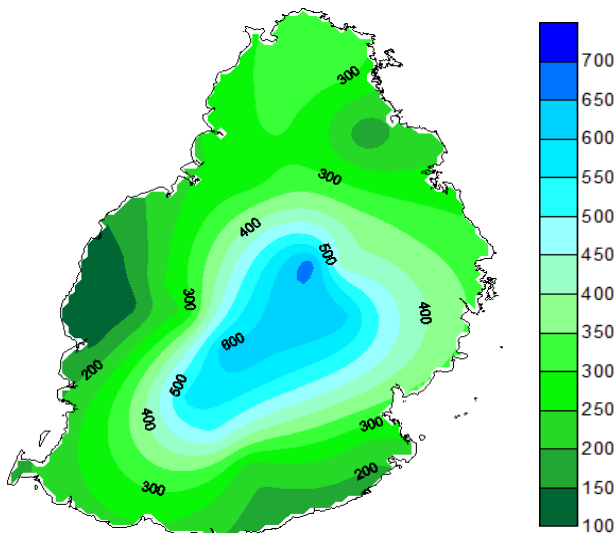
### Mauritius

The month of April 2019 received above normal rainfall amounting to 335mm, representing 164 % of the long term mean. Rainfall was mainly associated with instability zones and afternoon local development. All regions received excessive rainfall except to the south. Excess rainfall up to 300mm was recorded over Central Plateau but deficit rainfall below 50mm was observed in the region of Britannia.

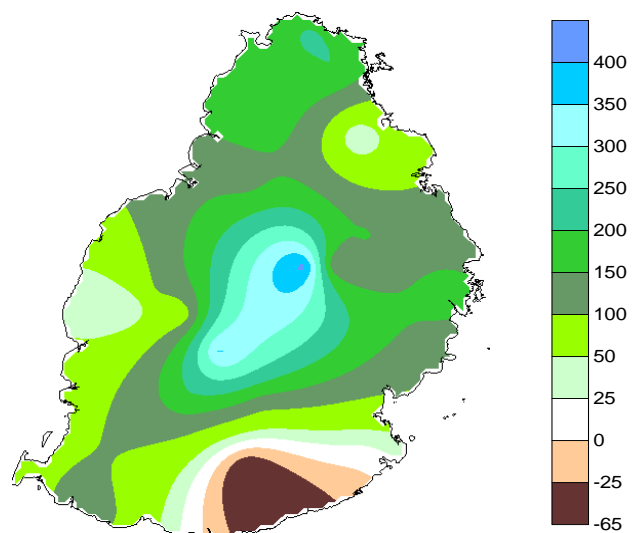


	W	N	S	E	CP	Island
LTM 81-10	84	137	279	279	244	204
1-30 Apr 19	135	277	330	440	473	335

Observed Rainfall (mm)



Rainfall Anomaly (mm)



### Outer Islands

		Amount (mm)		
	Stations	Actual Mean Rainfall	LTM Rainfall	% of LTM
<b>Rodrigues</b>	Pointe Canon	130	138	94
	Plaine Corail	49	110	45
	Citronelle	92	189	49
	Agalega	134	159	84
	St Brandon	17	110	15

Rodrigues received below normal rainfall and at Agalega it was slightly below.

Extremely dry conditions prevailed over St. Brandon with only 17mm of rainfall recorded for the month.

Ram Durmea

For Director  
16May 2019