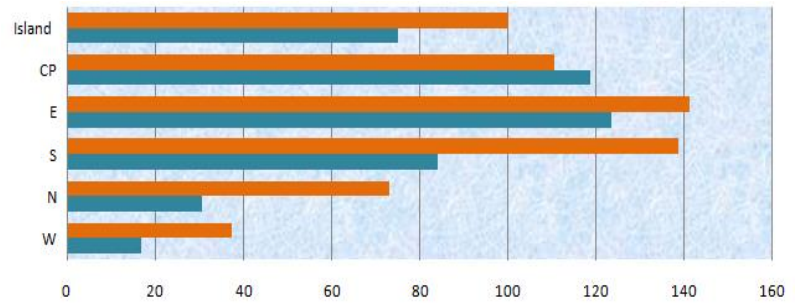


# Mauritius Meteorological Services

## Mean Rainfall for 16-30 April 2019

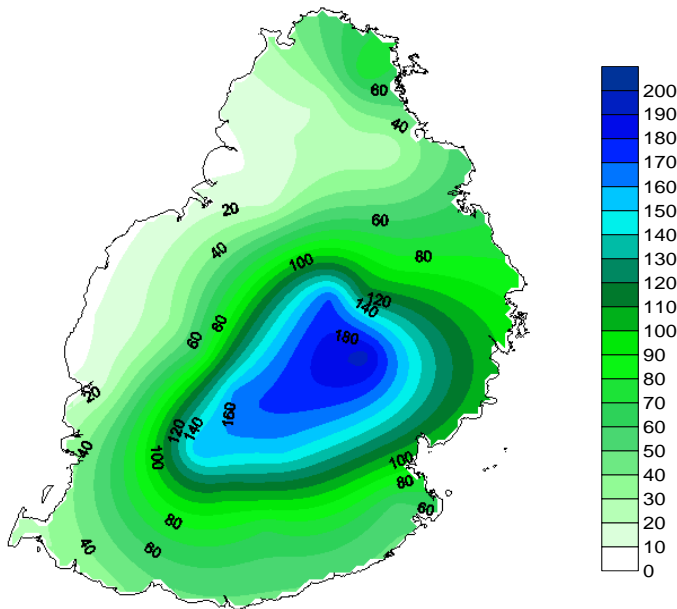
### Mauritius

Almost all regions of the island recorded below normal rainfall, except over the Central plateau. Over 160mm of rainfall was recorded over the high-grounds and Sans Souci region. Rainfall was particularly deficient in the southern and north-western part of the island. This second fortnight received 75% of the normal rainfall for the period.

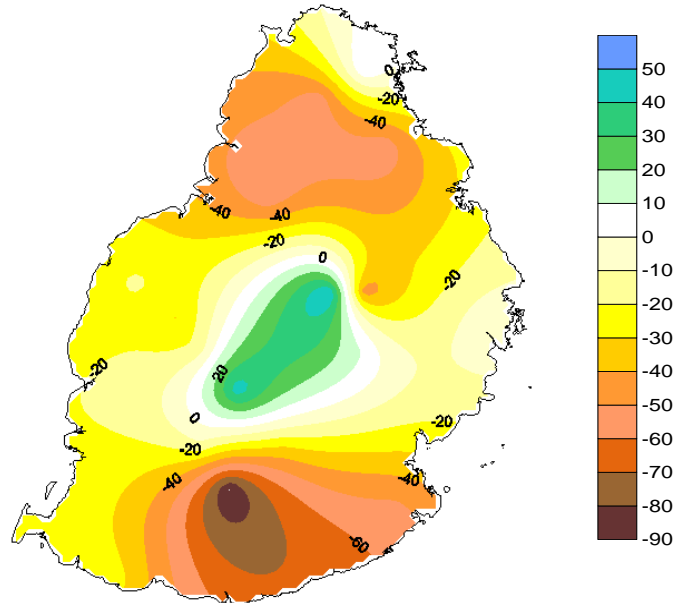


	W	N	S	E	CP	Island
LTM 81-10	37	73	139	141	111	100
16-30 Apr 19	17	31	84	124	119	75

Observed Rainfall (mm)



Rainfall Anomaly (mm)



### Outer Islands

		Amount (mm)		
	Stations	Actual Mean Rainfall	LTM Rainfall	% of LTM
Rodrigues	Pointe Canon	95	57	167
	Plaine Corail	33	57	58
	Citronelle	50	82	61
	Agalega	144	78	146
	St Brandon	8	58	14

Mean rainfall over Rodrigues was close to the normal for the fortnight

Very dry conditions prevailed over St. Brandon during this second fortnight while over Agalega a very wet condition prevailed.

Ram Dhurmea

For Director  
16 May 2019