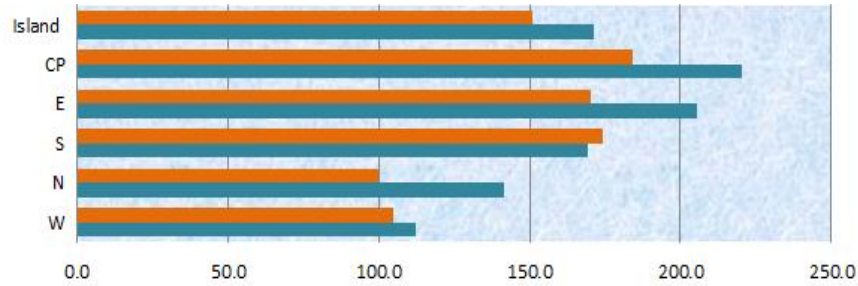


Mauritius Meteorological Services

Mean Rainfall for 16-31 January 2020

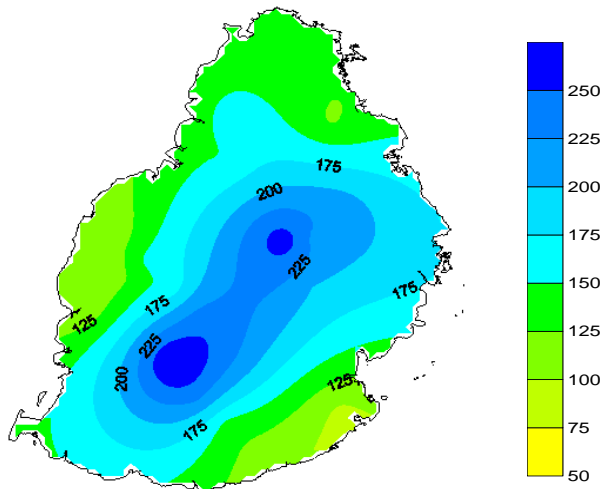
Mauritius

The second half of January 2020 had slightly above normal rainfall amounting to 171 mm, representing 113 % of the long term mean for this period. Rainfall was mainly concentrated to the North, East and over the Central Plateau which accounts for their above normal rainfall observed. Rainfall was locally deficient by 30mm in the regions of Plaisance and Britania whereas excess rainfall of above 70mm was observed in the regions of FUEL, Beau Champs and Grande Providence.

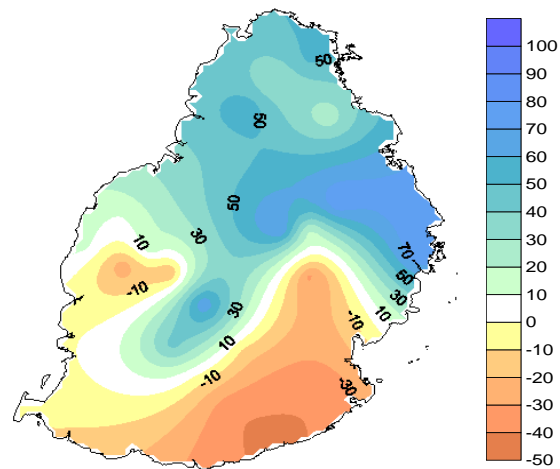


| | W | N | S | E | CP | Island |
|--|-------|-------|-------|-------|-------|--------|
| January 2nd half LTM (1981-2010) Rainfall (mm) | 105 | 100 | 174 | 170 | 184 | 151 |
| Actual Mean rainfall (mm) | 112.2 | 141.3 | 169.2 | 205.3 | 220.3 | 171.0 |

Observed Rainfall (mm)



Rainfall Anomaly (mm)



Outer Islands

| Stations | Amount (mm) | | |
|------------------|----------------------|--------------|----------|
| | Actual Mean Rainfall | LTM Rainfall | % of LTM |
| Rodrigues | | | |
| Pointe Canon | 85 | 84 | 101 |
| Plaine Corail | 120 | 71 | 169 |
| Citronelle | 114 | 102 | 112 |
| Agalega | 107 | 132 | 81 |
| St Brandon | 93 | 88 | 106 |

Rodrigues had above normal rainfall for this second half of January 2020.

St Brandon received normal rainfall whereas it was slightly dry at Agalega for this period.

Ram Dhurmea

For Director

10 February 2020