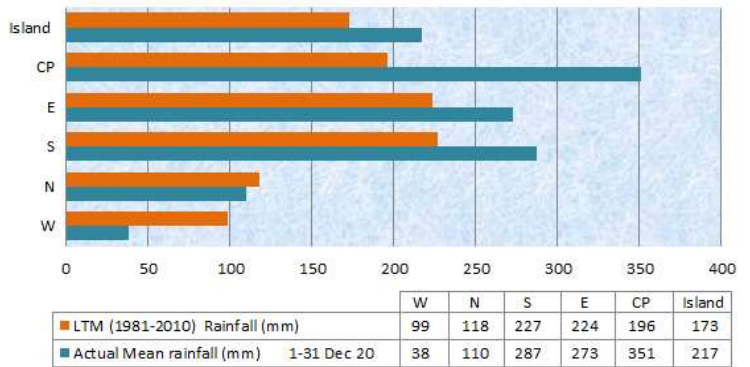


Mauritius Meteorological Services

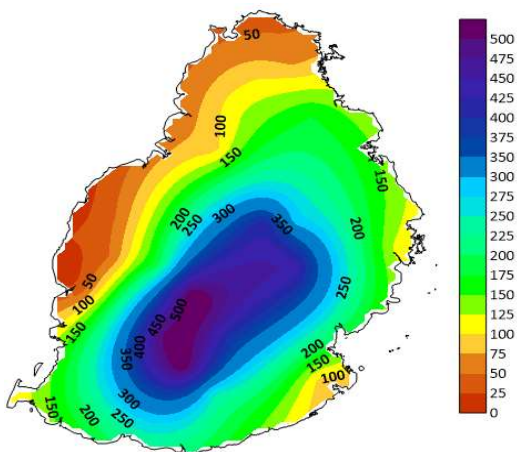
Mean Rainfall for 1-31 December 2020

Mauritius

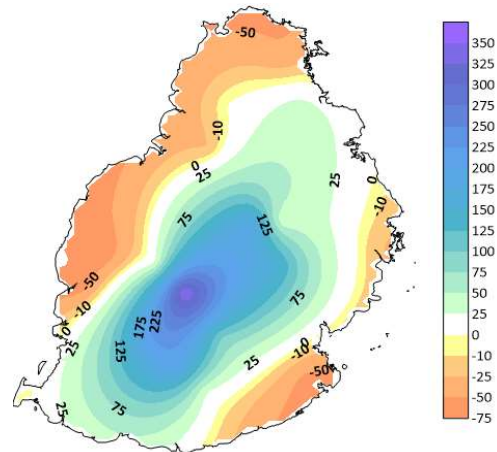
December 2020 had above normal rainfall amounting to 217mm, representing 125 % of the long term mean. It was rather dry over the Western region with rainfall being locally deficient by about 50 mm in the regions of Medine and Tamarin Estate in the West, the extreme North and the extreme South-east of the island. On the other hand, over the Central Plateau it was wet whereby an excess of above 350mm of rainfall was recorded locally in the region of Mon Bois.



Observed Rainfall (mm)



Rainfall Anomaly (mm)



Outer Islands

		Amount (mm)		
	Stations	Actual Rainfall	LTM Rainfall	% of LTM
Rodrigues	Pointe Canon	55	59	93
	Plaine Corail	47	61	77
	Citronelle	106	89	119
	Agalega	123	218	56
	St Brandon	219	83	264

Rodrigues had close to normal rainfall and Agalega had well below normal rainfall.

It was wet at St. Brandon with 264% of its monthly normal.

Ram Dhurmea

For Director

11 January 2021