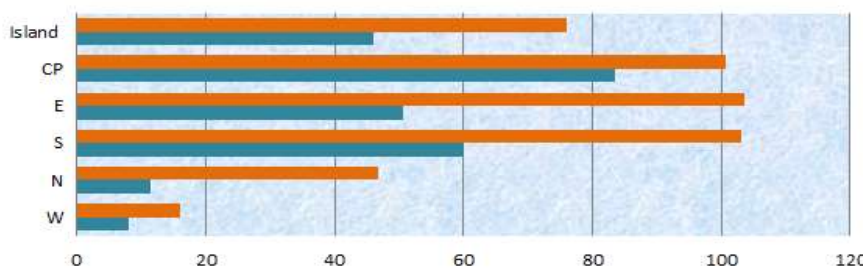


Mauritius Meteorological Services

Mean rainfall for 16-31 May 2021

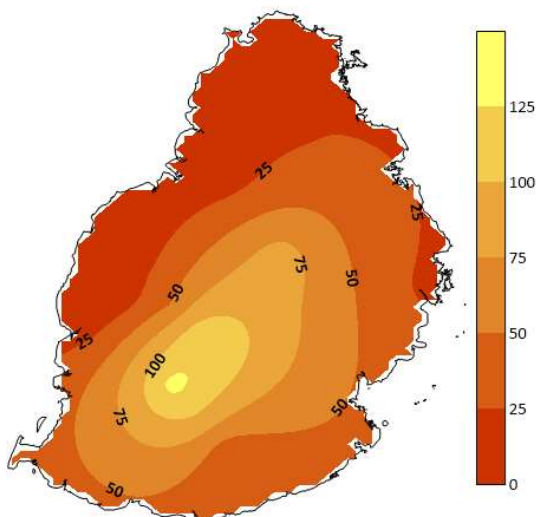
Mauritius

The second half of May 2021 had well below normal rainfall amounting to 46 mm, representing 60 % of the Long Term Mean. The whole island recorded below normal rainfall; being locally deficient by about 70mm in the region of Sans Souci and Britannia.

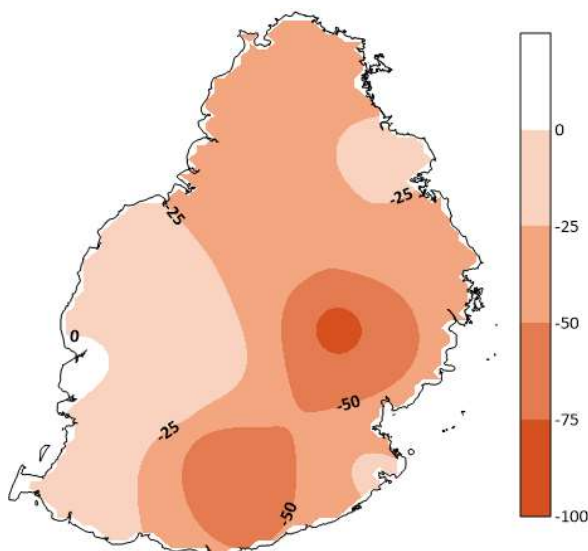


	W	N	S	E	CP	Island
May 2nd half LTM (1981-2010) Rainfall (mm)	16	47	103	104	101	76
Actual Mean rainfall (mm)	8	12	60	51	84	46

Observed Rainfall(mm)



Rainfall Anomaly (mm)



Outer Islands

		Amount (mm)		
Stations		Actual Rainfall	LTM Rainfall	% of LTM
Rodrigues	Pointe Canon	15	45	33
	Plaine Corail	18	45	40
	Citronelle	31	80	38
Agalega		23	63	37
St Brandon		5	37	12

It was dry at Rodrigues and Agalega.

Very dry condition prevailed at St. Brandon.

Ram Dhurmea

For Director

11 June2021