

Mauritius Meteorological Services

Temperature Mid-Winter 2022

The first wintry conditions were felt during the second fortnight of May 2022. It was noted that the anticyclones were transiting to the south of Mascarenes Islands during the month of May and June 2022. The anticyclones started to become stronger by end of June. The strongest anticyclone for this winter season till date started to move to the south of Madagascar on Saturday 16 July 2022. On Sunday, it migrated to the south of Mauritius and had a central pressure of 1039 hPa (Figure 1). Such high-pressure system brings a cold airmass over our region as the cloud structure depicted on satellite picture (Figure 2).

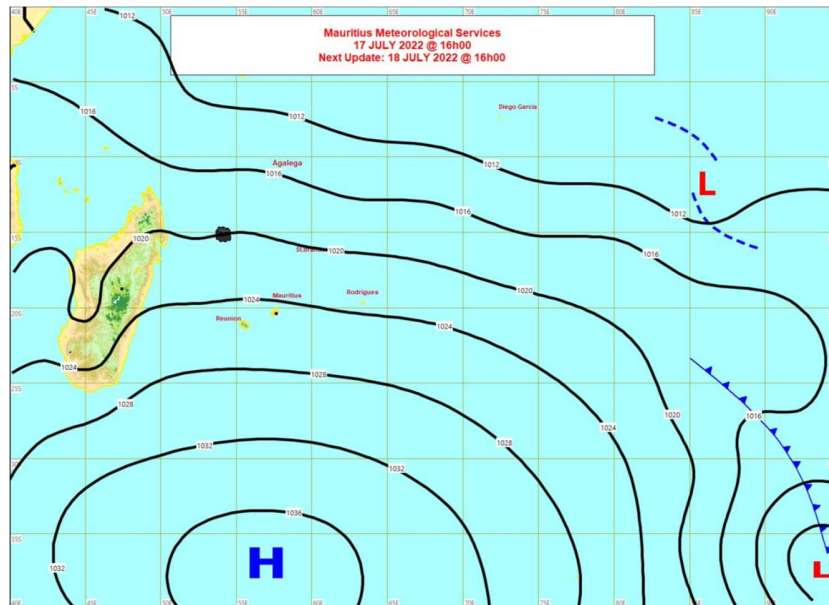


Figure 1: Synoptic chart of 17 July 2022.

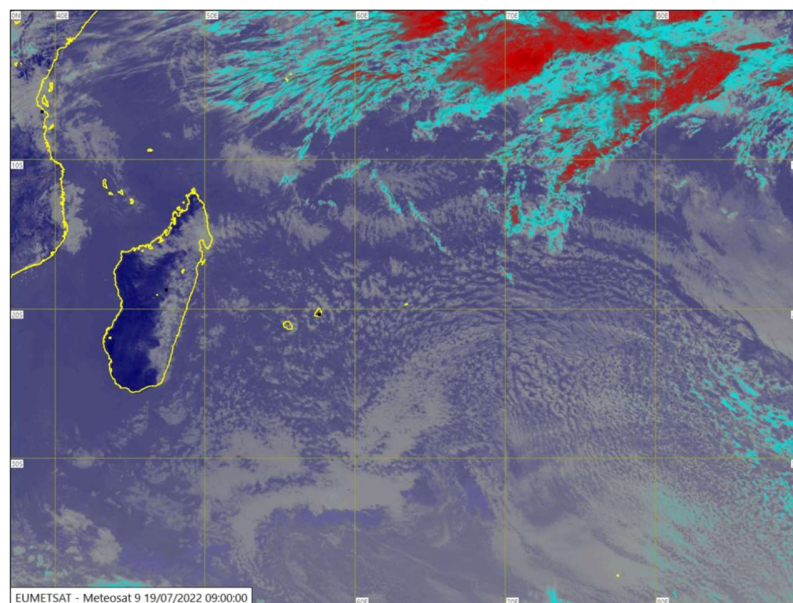


Figure 2: Satellite Picture chart of 19 July 2022 at 13h00 LT.

An analysis of the temperature for Mauritius was conducted with available data for the month of May and June and compared to analogous previous years, that is years having similar global atmospheric characteristics (Weak La Nina).

It was observed during winter up to mid-July that the temperatures recorded were very close to previous analogous years (Figures 3 to 6). Some variability on a diurnal basis was observed over Mauritius as the air mass over our region changed under the influence of transiting anticyclones.

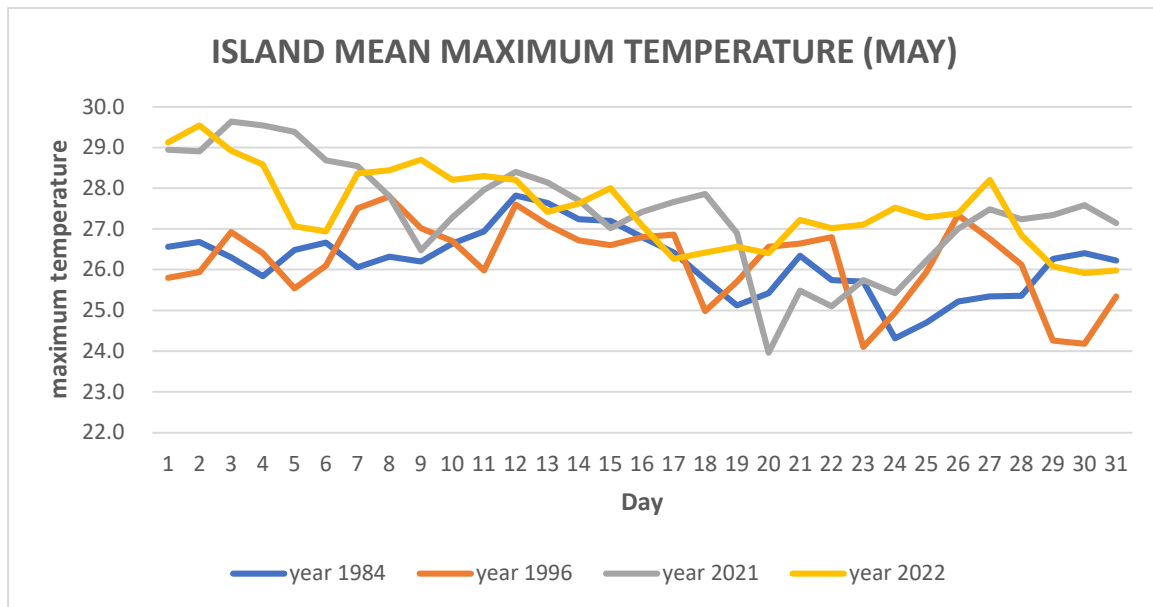


Figure 3: Observed maximum temperature over Mauritius for the month of May

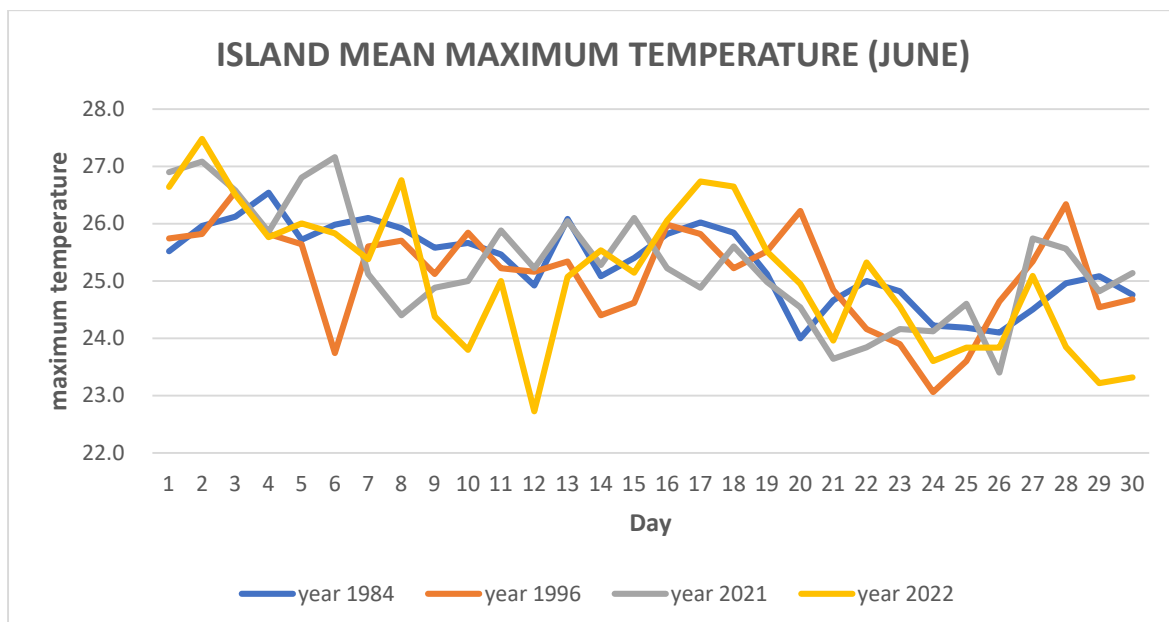


Figure 4: Observed maximum temperature over Mauritius for the month of June

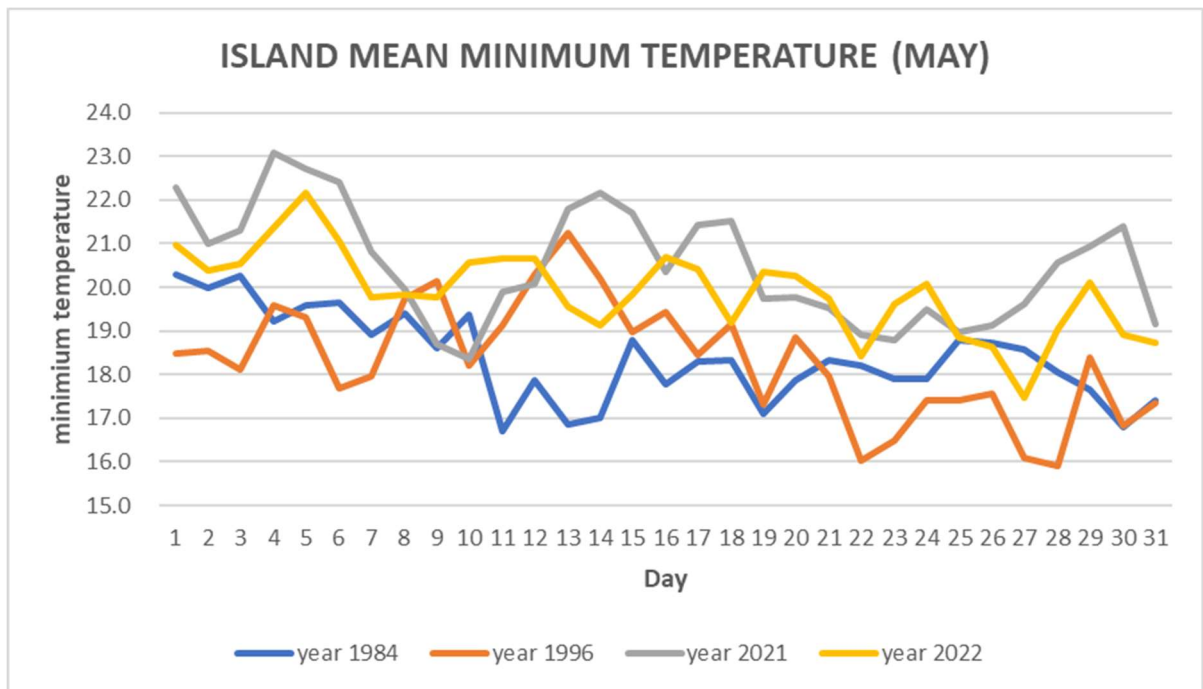


Figure 5: Observed minimum temperature over Mauritius for the month of May

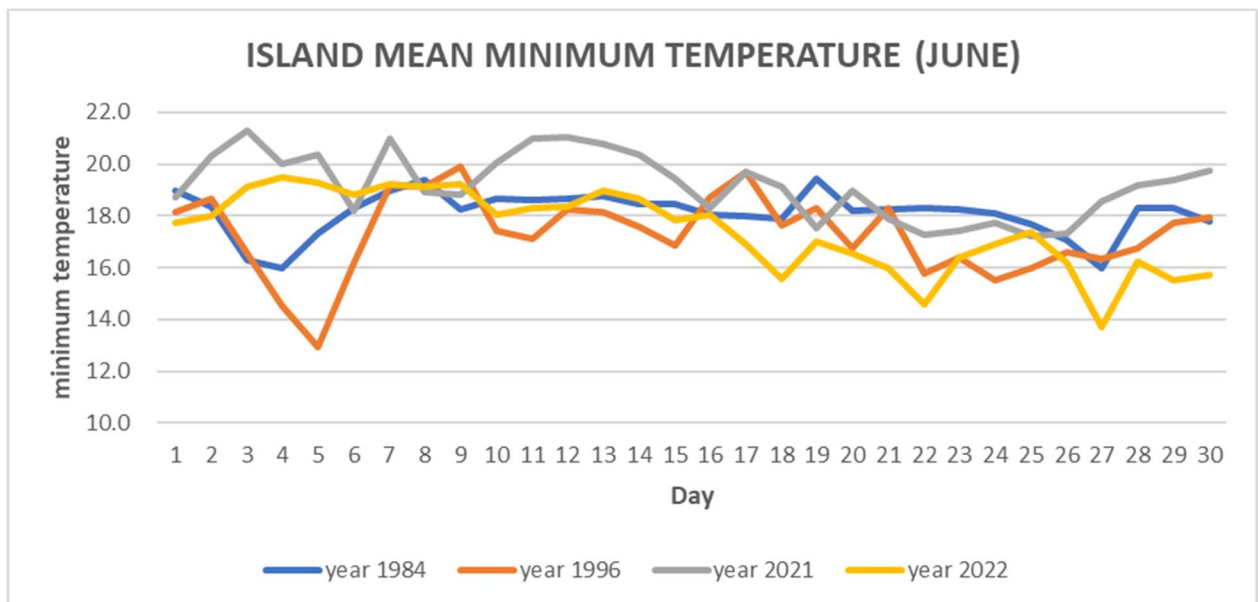


Figure 6: Observed minimum temperature over Mauritius for the month of June

Observations on extreme temperature:

New extreme minimum temperatures were observed on 27 June 2022

Region	Previous Extreme Minimum Temperature	New Extreme Minimum Temperature
Domaine les Pailles	15.0 °C	13.5 °C
Barkly	13.9 °C	13.3 °C

The coldest night observed up to now during the present winter season was on 27 June 2022 with minimum temperature anomaly ranging between 3 and 7 °C below the long term mean over nearly all the stations in Mauritius.

The lowest minimum temperature observed was 11.4⁰ C at Mon Bois on 27 June 2022 due to clear sky and light wind conditions.

The coldest day observed up to now during the present winter season was on 12 June 2022 with maximum temperature anomaly between 2 to 3 °C below the long-term mean.

The lowest maximum temperature observed till date was 16.8 °C at Grand Bassin on 24 June 2022 due to an overcast sky and rainy weather at the location as well as cold air advection.

The right of publication in print, electronic and any other form is reserved by the Meteorological Services. Any part of this document may be reproduced provided complete source is acknowledged or after authorization from
Director, Meteorological Services,
St Paul; Road Vacoas,
Tel: 6861031/32, Fax: 6861033, email: meteo@intnet.mu
21 July 2022