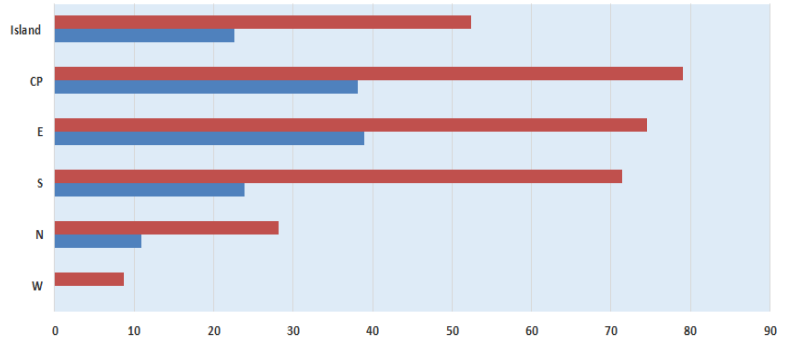


# Mauritius Meteorological Services

## Mean Rainfall for 16-31 August 2022

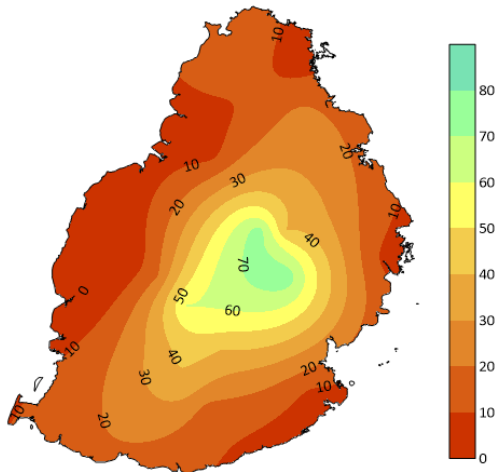
### Mauritius

Dry conditions prevailed over the island during the second fortnight of August 2022 with 23 mm, representing 44 % of the long-term mean. Rainfall was deficient almost over the whole island, especially in the region of Bois Cheri, Arnaud, Union Park and Britania where it was by 55-90 mm.

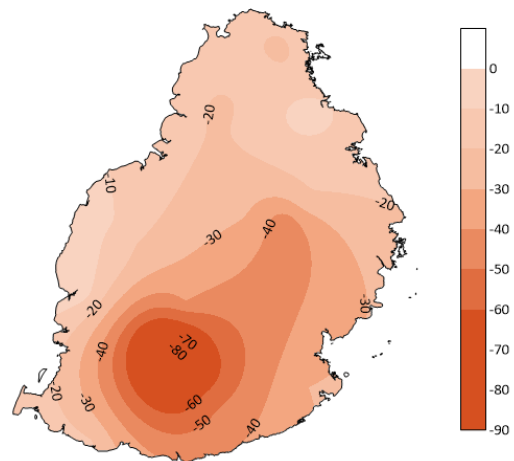


	W	N	S	E	CP	Island
■ 2nd Half LTM (1991-2020) for August (mm)	9	28	71	75	79	52
■ Actual Mean Rainfall for 2nd half August 2022 (mm)	0	11	24	39	38	23

Observed Rainfall (mm)



Rainfall Anomaly (mm)



### Outer Islands

		Amount (mm)		
Stations		Actual Rainfall	LTM Rainfall	% of LTM
Rodrigues	Pointe Canon	26	30	87
	Plaine Corail	18	25	72
	Citronelle	37	54	69
Agalega		12	33	36
St Brandon		17	25	68

Below normal rainfall was recorded over Rodrigues whereas well below normal rainfall was observed over St Brandon  
Dry conditions prevailed over Agalega

**Ram Dhurmea**

**For Acting Director**

06 September 2022