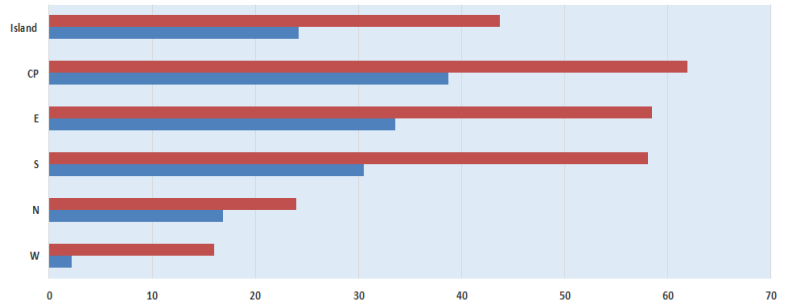


# Mauritius Meteorological Services

## Mean Rainfall for 16-31 October 2022

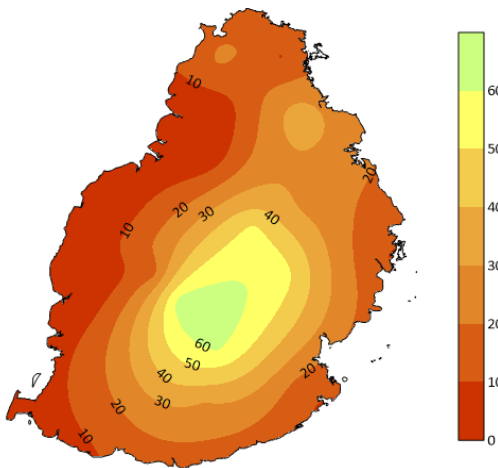
### Mauritius

Well below normal rainfall was recorded during the second fortnight of October 2022 amounting to 24 mm, representing 55 % of the long-term mean. Rainfall was deficient almost over the whole island, especially in the region of Arnaud, Bois Cheri, and Sans Souci where it was by 30-40 mm. However, in the region of Mon Loisir, rainfall was locally in excess by about 10 mm.

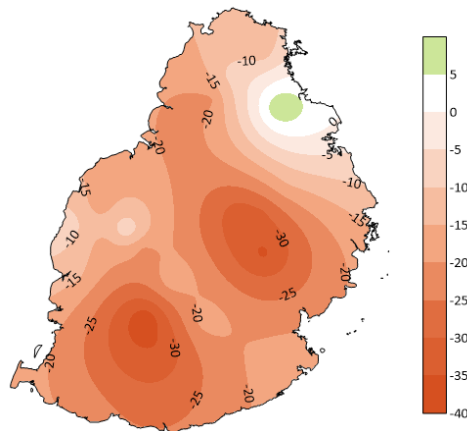


	W	N	S	E	CP	Island
■ 2nd Half LTM (1991-2020) for October (mm)	16	24	58	59	62	44
■ Actual Mean Rainfall for 2nd half October 2022 (mm)	2	17	31	34	39	24

Observed Rainfall (mm)



Rainfall Anomaly (mm)



### Outer Islands

		Amount (mm)		
Stations		Actual Rainfall	LTM Rainfall	% of LTM
Rodrigues	Pointe Canon	21	25	84
	Plaine Corail	30	18	167
	Citronelle	41	42	98
Agalega		01	53	02
St Brandon		07	14	50

Slightly above normal rainfall was recorded over Rodrigues whereas well below normal rainfall was observed over St Brandon.

Very dry conditions prevailed over Agalega

**Ram Dhurmea**

**For Acting Director**

07 November 2022