



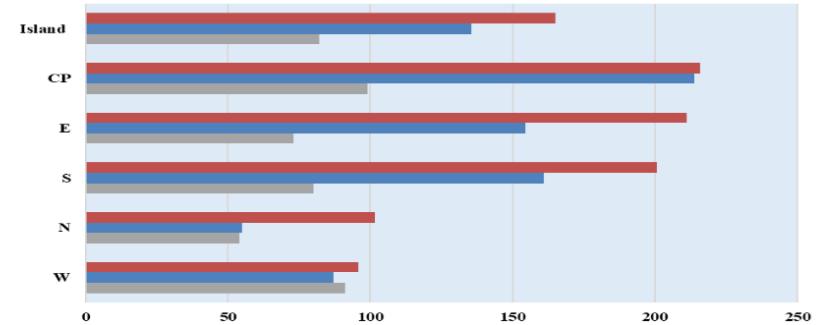
MAURITIUS METEOROLOGICAL SERVICES

Mean Rainfall for 1-31 December 2024 updated on 10 January 2025

Mauritius

Slightly below normal rainfall was recorded during the month of December 2024, amounting to 135 mm and representing 82% of the long-term mean.

The Centre recorded both the highest rainfall amount of 214 mm and the highest percentage of 99% for the month.



	W	N	S	E	CP	Island
LONG TERM MEAN for December 2024	96	102	201	211	216	165
Actual Mean Rainfall (mm) December 2024	87	55	161	155	214	135
Percentage (%) of Long Term Mean for the month of December 2024	91	54	80	73	99	82

Outer Islands

		Amount (mm)		
Stations		Actual Rainfall	LTM Rainfall	% of LTM
Rodrigues	Pointe Canon	47	68	69
	Plaine Corail	42	78	54
	Citronelle	76	102	74
Agalega		494	226	219
St Brandon*		-	-	-

- Well below normal rainfall was recorded over Rodrigues
- Very wet conditions prevailed over Agalega. The excess rainfall recorded over the island, was due to the passage of ITC Chido on the 11th and 12th of December 2024

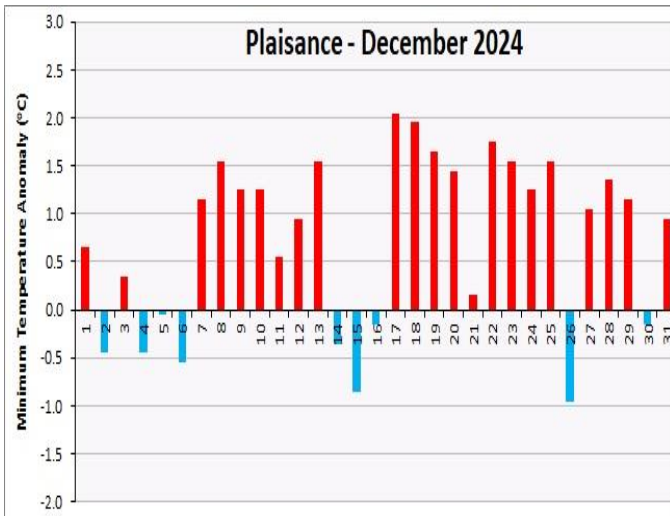
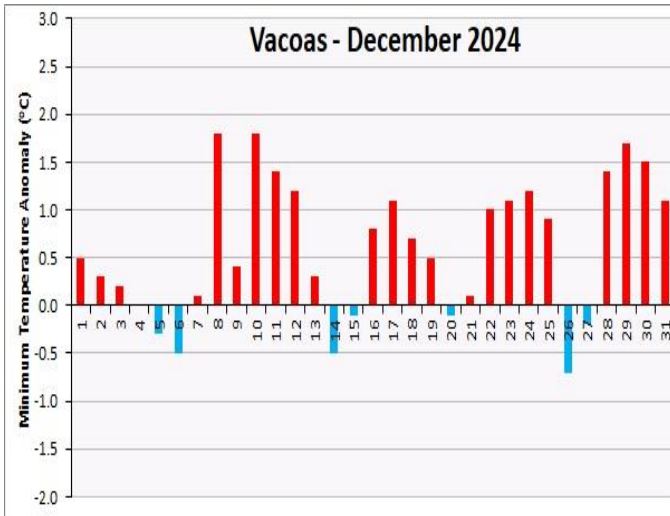
* The St. Brandon Meteorological Station is currently closed



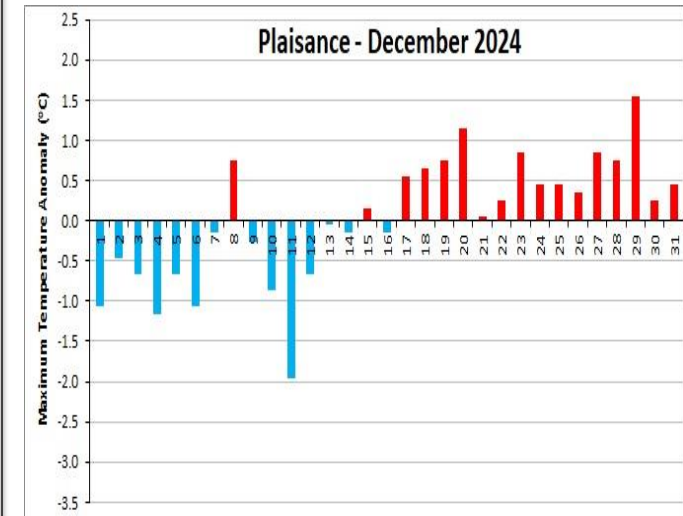
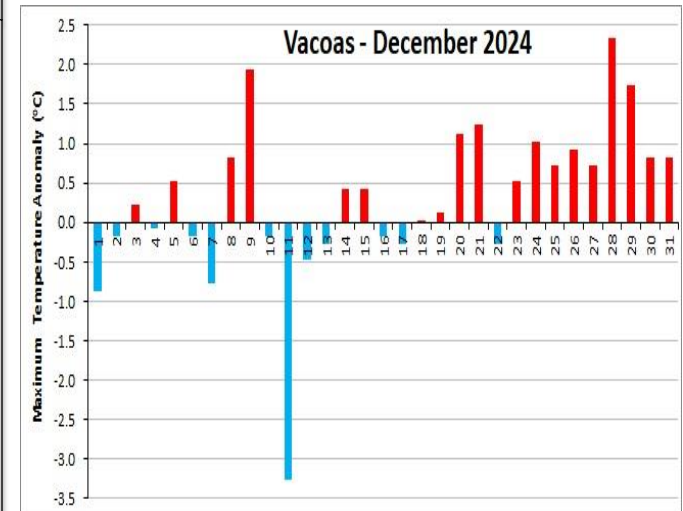
MAURITIUS METEOROLOGICAL SERVICES

Temperature for December 2024

Minimum Temperature



Maximum Temperature



Temperature

Minimum temperature was on average 0.6 °C and 0.7 °C warmer than the normal at Vacoas and Plaisance respectively.

Maximum temperature was on average 0.3 °C warmer than the normal at Vacoas and normal at Plaisance.

The highest and lowest minimum and maximum temperatures recorded at Vacoas and Plaisance were:

Vacoas		
	Min	Max
Highest	21.9 °C (08 & 10 December)	29.9 °C (28 December)
Lowest	19.4 °C (26 December)	24.3 °C (11 December)
Plaisance		
	Min	Max
Highest	24.8 °C (17 December)	31.2 °C (29 December)
Lowest	21.8 °C (26 December)	27.7 °C (11 December)

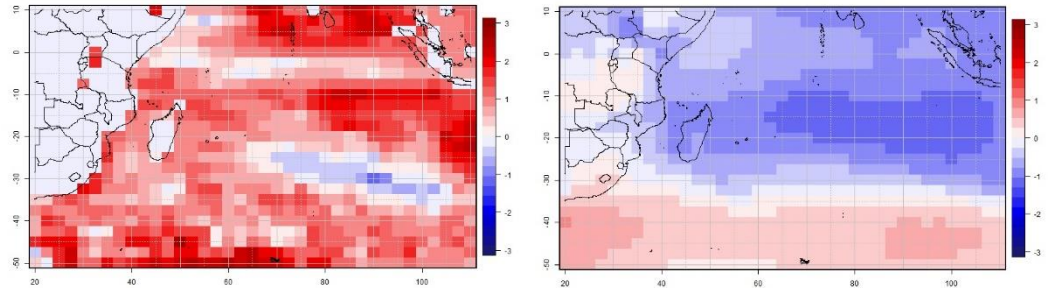


MAURITIUS METEOROLOGICAL SERVICES

Rainfall and Temperature Forecast for Jan-Feb-Mar (JFM) 2025

ENSO and IOD conditions are expected to remain neutral during the forecast period while the SIOD is expected to become neutral by the end of the forecast period.

Sea surface temperatures are expected to be above normal and pressure anomalies to be near normal in the Mascarene region as shown in the sst and pressure anomaly charts respectively.



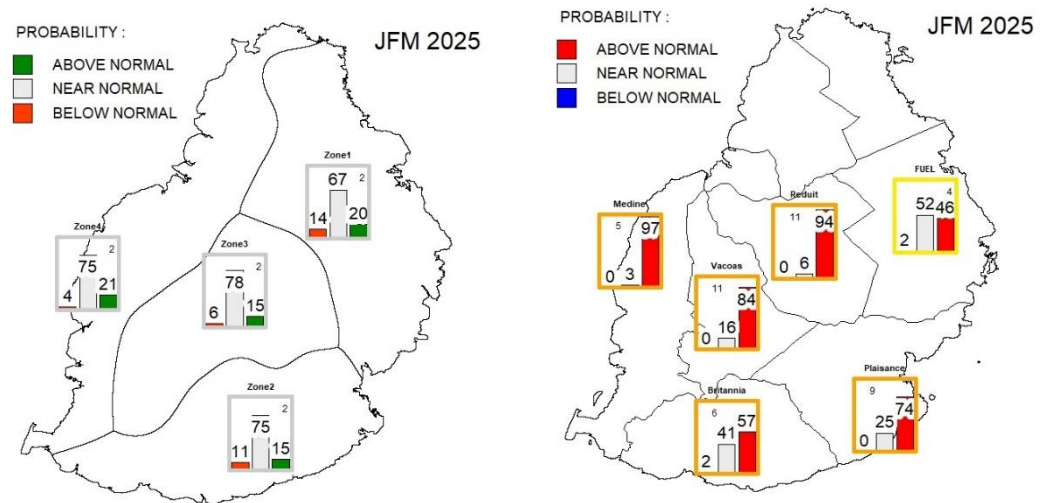
(a) Sea surface temperature (sst) anomaly and (b) pressure anomaly charts for JFM

Consensus rainfall forecast for Mauritius

In spite statistical rainfall forecast is showing normal tendency, the cumulative rainfall for January to March 2025 is forecasted to be **below normal** as follows:

- **January:** Below Normal (about 185 mm)
- **February:** Slightly Below Normal (about 275 mm)
- **March:** Below Normal (about 218 mm)

Mean temperature is forecasted to be above normal over the whole island.



Statistical Model Forecast of (a) rainfall and (b) temperature for JFM

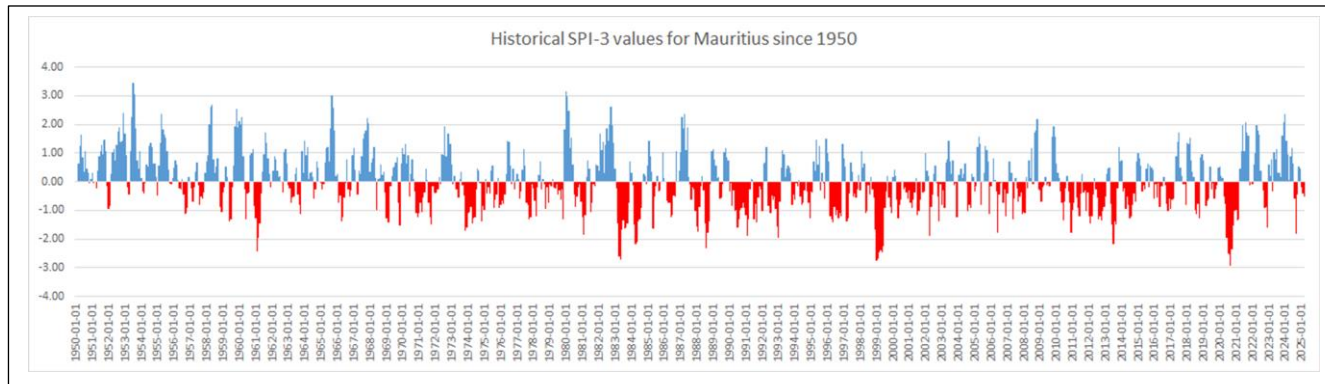


MAURITIUS METEOROLOGICAL SERVICES

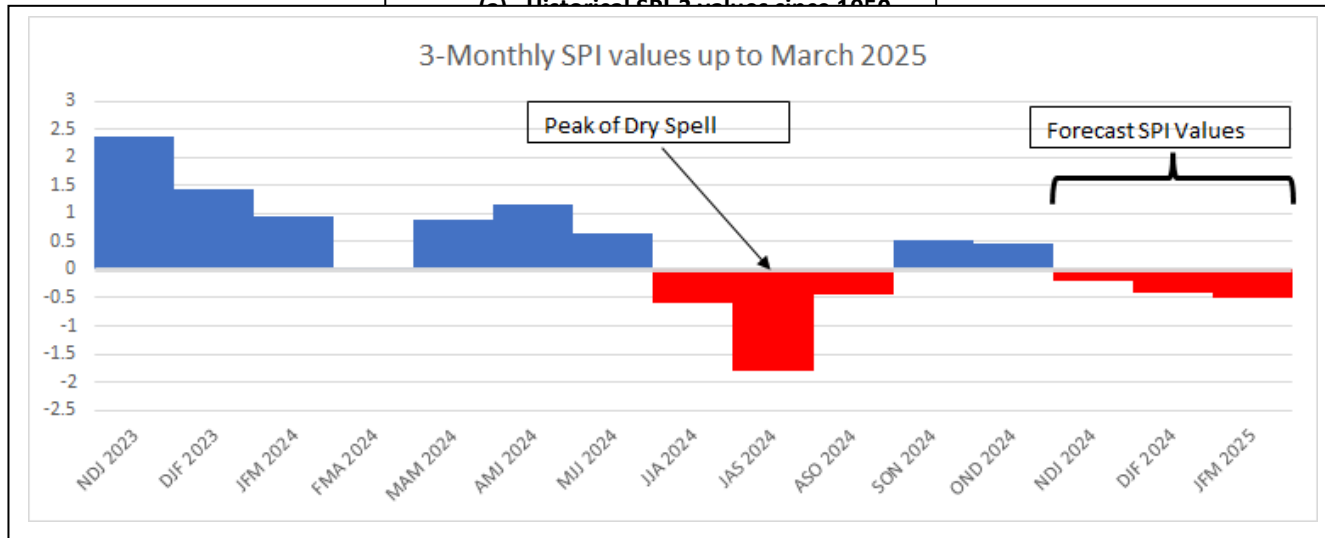
Standardized Precipitation Index (SPI) Monitoring in Mauritius

Aim: To apply the SPI, as approved by the World Meteorological Organization, in Mauritius to monitor rainfall deficits during dry spell events.

Current Status: The dry spell which started in **JJA-24** has temporarily decreased in **SON and OND-24**. However, the rainfall deficits which peaked in **JAS-24** has not been compensated by the near normal rainfall recorded in **SON and OND-24** as shown in Fig (b). In addition, forecast SPI values for **NDJ, DJF-24 and JFM-25** indicate **near normal** for NDJ-24 and **weakly dry** for DJF-24 and JFM-25 as follows: **-0.20, -0.42 and -0.50** respectively.



(a) Historical SPI-3 values since 1950



(b) Current SPI-3 value, Status & Forecast

Observed SPI Status 2024		
Period	SPI-3 Value	Category
JFM	+2.36	Extremely Wet
FMA	+1.42	Moderately Wet
MAM	+1.07	Moderately Wet
AMJ	+1.17	Moderately Wet
MJJ	+0.64	Near Normal
JJA	-0.60	Weakly Dry
JAS	-1.81	Severely Dry
ASO	-0.45	Weakly Dry
SON	+ 0.52	Near Normal
OND	+0.47	Near Normal
Forecast SPI based on Monthly RR Data		
NDJ 24	-0.20	Near Normal
DJF 24	-0.42	Weakly Dry
JFM 25	-0.50	Weakly Dry

WMO SPI Dry/Wet Classifications		
Level	SPI Values	Category
1	+2.0 and above	Extremely Wet
2	+1.5 to +1.99	Very Wet
3	+1.0 to +1.49	Moderately Wet
4	-0.99 to +0.99	Near Normal
5	-1.0 to -1.49	Moderately Dry
6	-1.5 to -1.99	Severely Dry
7	-2.0 and less	Extremely Dry

The right of publication in print, electronic and any other form is reserved by the Meteorological Services. Any part of this document may be reproduced provided complete source is acknowledged or after authorization from:

Acting Director, Meteorological Services,
St Paul Road, Vacoas.

Tel: 6861031/32, Fax: 6861033, email: meteo@intnet.mu

Updated on: 10 January 2025